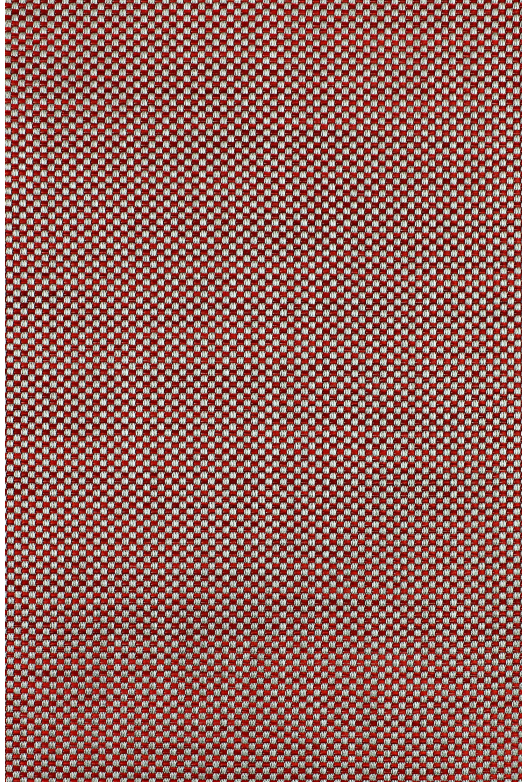




# CHESS

Upholstery and decoration fabric. This versatile fabric with a fine chess pattern and a broad set of applications looks very natural. The delicate sheen and soft feel bestow elegance. Its natural colouring makes it a timeless basic.



<b>Use:</b>	Upholstery fabric
<b>Number of colours:</b>	24
<b>Special colours:</b>	- from 200 m / 220 yds without surcharge.
<b>Material:</b>	55% Viscose 30% Cotton 15% Polyester
<b>Fabric width:</b>	140 cm/55 inch/1.53 yard
<b>Weight:</b>	429 g/m <sup>2</sup>
<b>Additional use:</b>	
<b>Care:</b>	
<b>Dry cleaning (length shrinkage):</b>	1.5%
<b>Abrasion resistance:</b>	15'000 Martindale
<b>Light fastness:</b>	see downloads
<b>Certificates / tests:</b>	Lightfastness certificate Test results USA

\*all testing reports can be downloaded from our website under product details



# CHESS



**Note:**

Colours may vary. Please ask for our colour samples.

\* As long as stock lasts

# SYMBOLS AND PRODUCT INFORMATION

## Product information

	Inherently flame retardant
	Width (cm)
	Can be railroded (only valid for curtains)
	Has to be railroded
	Must not be railroded
	Repeat in warp direction
	Repeat in weft direction
	Weight (g/m2)
	Yarn dyed
	Piece dyed
	Knitted
	Woven
	Warp print
	Screen print/burnout
	Metalized on one side
	Pearl reflex

	Free from harmful substances / Oddy
	Antimicrobial (counteracts colonisation and multiplying of micro organisms and odours.)
	light transmission level Tv, n-h
	light transmission level Tv, n-nn
	light transmission level Tv, n-dif
	light reflection level Pv, n-h
	light absorption level Av
	UV transmission level Tuv
	solar transmission level Te, n-h
	solar reflection level Pe, n-h
	solar absorption level Ae
	Usable in a bathroom/wet room (Plissee)
	Stain resistant (Plissee)
	Various articles are only available in complete picture repeats. The price is quoted per repeat in each case.
	Additional product information

## Material information

<b>AC</b>	Acetate
<b>CA</b>	Hemp
<b>CO</b>	Cotton
<b>EA</b>	Elasthan
<b>GL</b>	Glass fibre
<b>LI</b>	Linen
<b>MD</b>	Modal
<b>ME</b>	Metal
<b>PA</b>	Polyamide
<b>PC</b>	Acrylic
<b>PE</b>	Polyethylene
<b>PI</b>	Paper
<b>PL</b>	Polyester
<b>PLF</b>	Flameretardant polyester
<b>PLF CS</b>	Flameretardant polyester (Trevira CS)
<b>PN</b>	Polycarbonat
<b>PP</b>	Polypropylene
<b>PU</b>	Polyurethan
<b>RA</b>	Ramie
<b>SE</b>	Silk
<b>SI</b>	Silicone
<b>TR</b>	Different material (wood, paper, feathers etc.)
<b>VI</b>	Viscose
<b>WM</b>	Wool Mohair
<b>WV</b>	Wool

# SYMBOLS AND PRODUCT INFORMATION

## Intended purposes



Curtains/Sheers



Roller blinds (colours see separate roller blind collection)



Panels (process the panels in warp direction to get optimal hang properties)



Vertical blinds



Roman blinds



Upholstery (for heavy use in contract application).  
Martindale > 30'000



Upholstery (for heavy use in domestic application/for normal  
use in contract application). 20'000 < Martindale < 30'000



Upholstery (for normal use in domestic application/for careful  
use in contract application). Martindale < 20'000



Loose cover for careful use in domestic application.  
Martindale < 5'000



Bedspreads



Table cloth domestic use



Wallcovering



Textile wallpaper (can be paper backed, minimum quantity)



Cushion



Acoustical fabrics



Adhesive Textiles/Gecko/Gecko in the Box



Fabrics with very high lightfastness for indoor and outdoor use



Blackout



Reverso



Plissé



Comb plissé